



# Spare parts SP500

FAS Converting Machinery AB

+46-411-69260

[service@fasconverting.se](mailto:service@fasconverting.se)

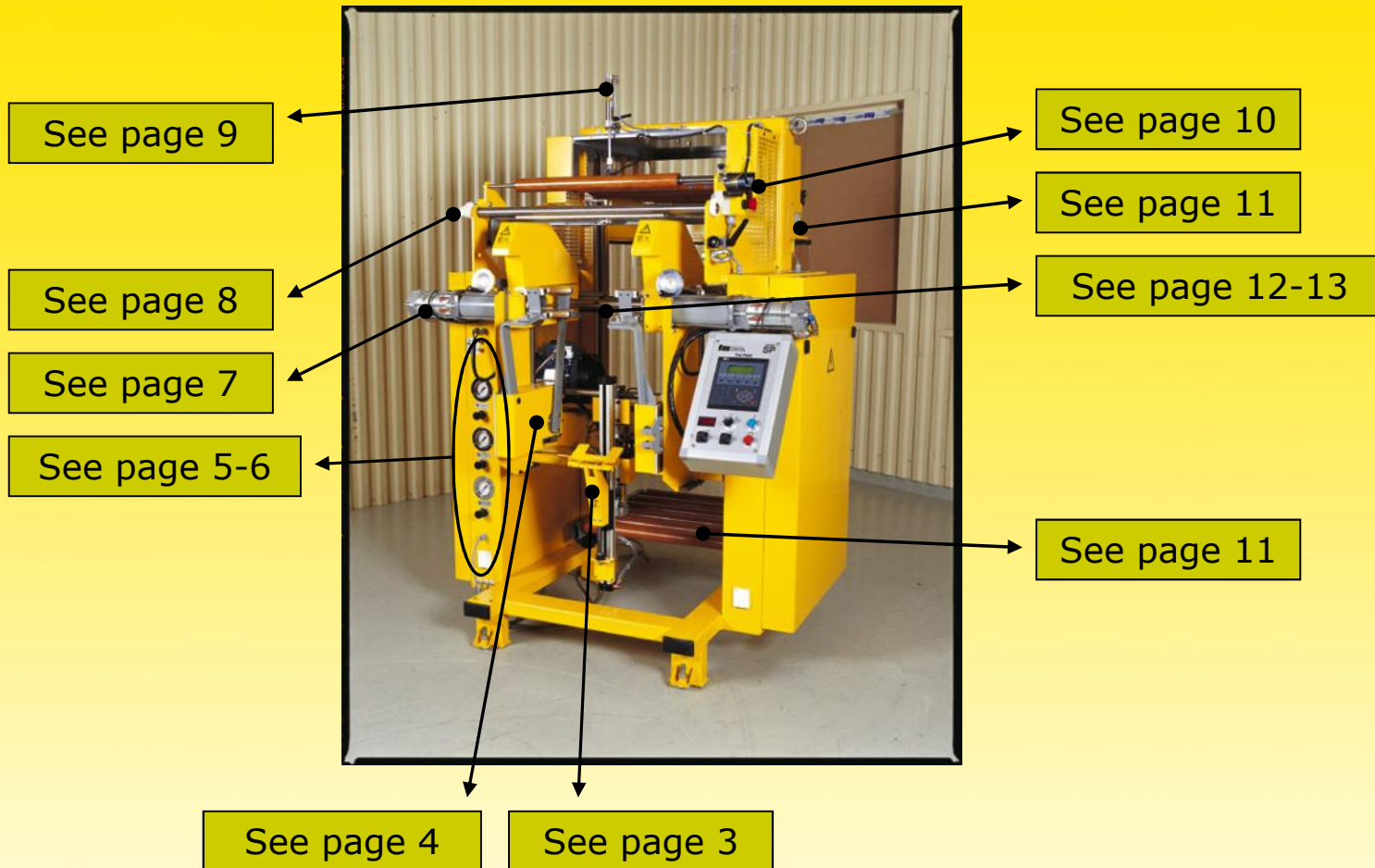
Bags on roll machinery specialist from Sweden !!

2012-05-07

© Fas Converting Machinery AB

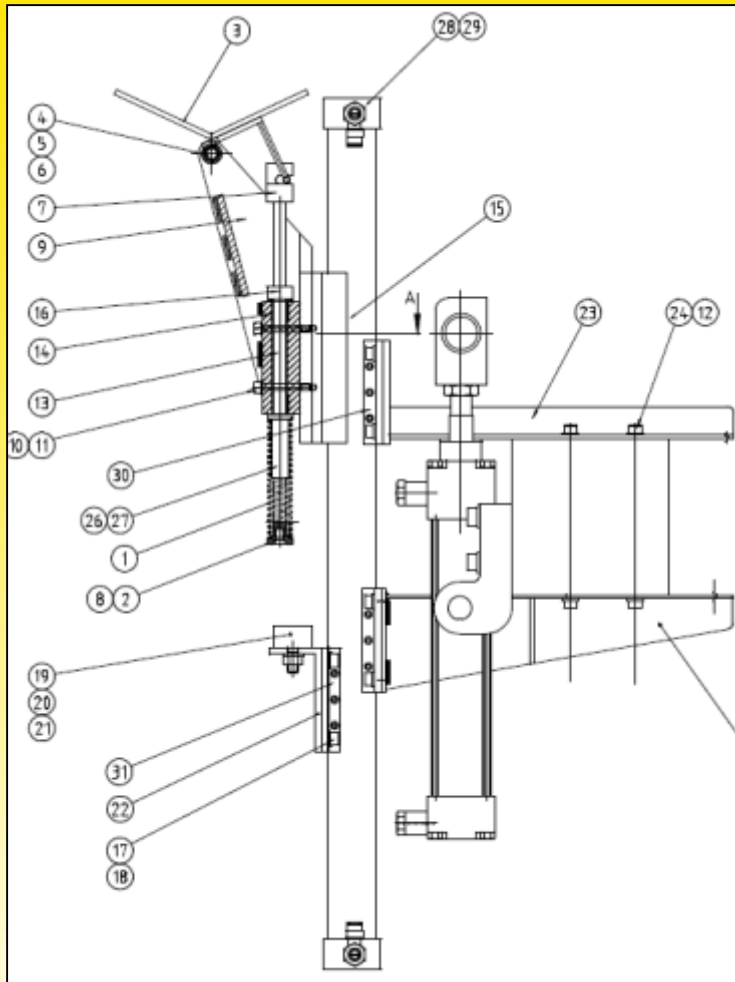
-1-

**fas** converting  
machinery ab





## Complete Roll catcher part no. 0801122



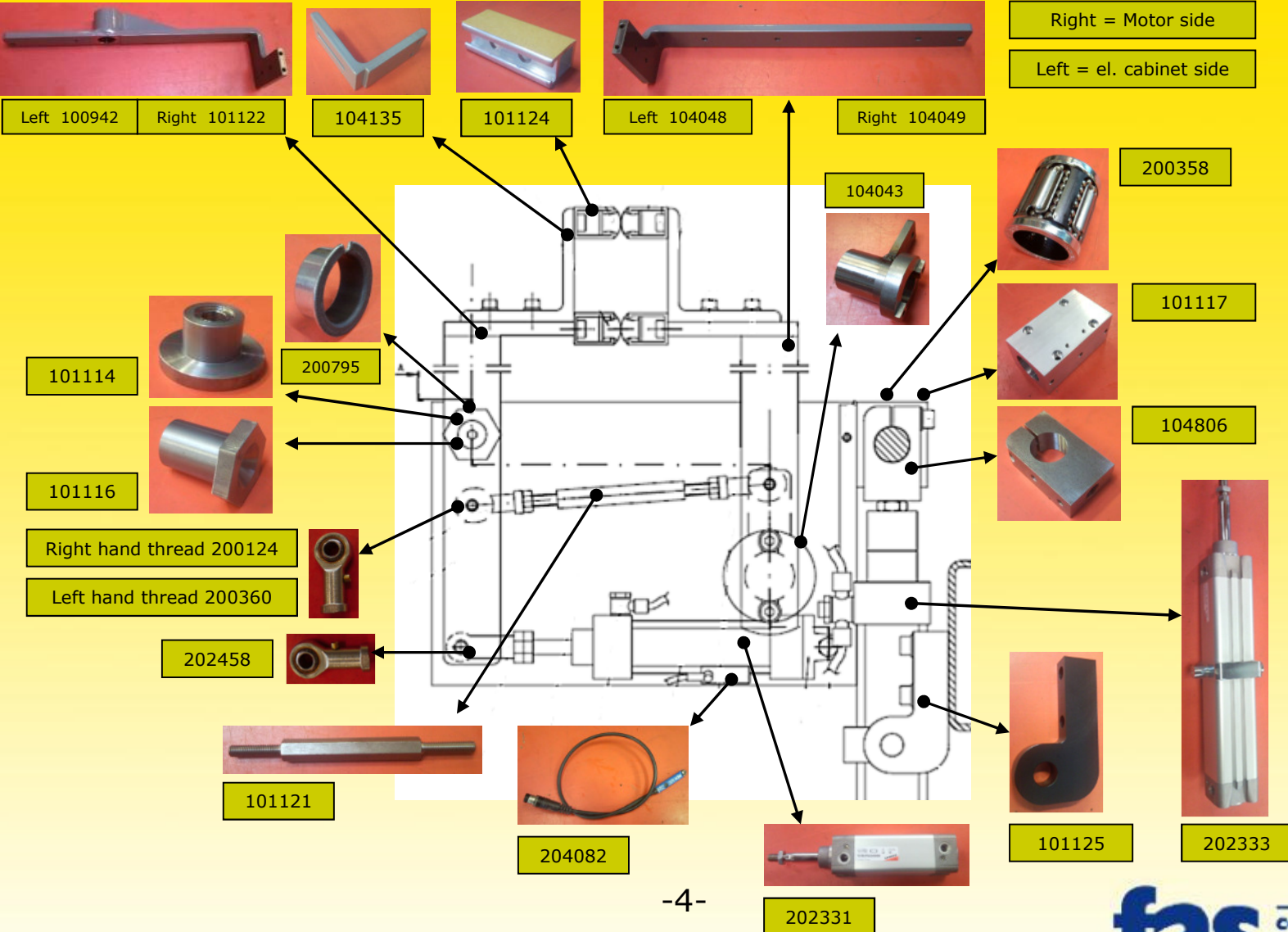
31	1	Cylinder support	106822
30	2	Cylinder support	202937
29	2	Pneum. connector	202148
28	2	Check valve	200866
27	2	Silicon washer	104554
26	1	Spring guide	104553
25	1	Support lower	104392
24	8	Bolt	200328
23	1	Support top	104414
22	1	Support	106821
21	1	Nut	200189
20	1	Washer	200224
19	1	Shock absorber	202113
18	12	Washer	200294
17	12	Bolt	200286
16	1	Collar	201091
15	1	Cylinder	202936
14	2	Bushing	200164
13	1	Tilting shaft	104552
12	4	Washer	202262
11	4	Washer	200042
10	4	Bolt	200304
9	1	Support cradle	106383
8	1	Screw	201057
7	1	Dog	104550
6	2	Grub screw	200028
5	2	Bushing	202152
4	1	Pivot shaft	104412
3	1	Cradle	
2	1	Washer	104547
1	1	Spring	202211

Retrofit: In order to  
replace older type  
of cylinder.  
Part No. 300105

# Gripper arm section

Right = Motor side

Left = el. cabinet side





Pneumatics



201314



201130



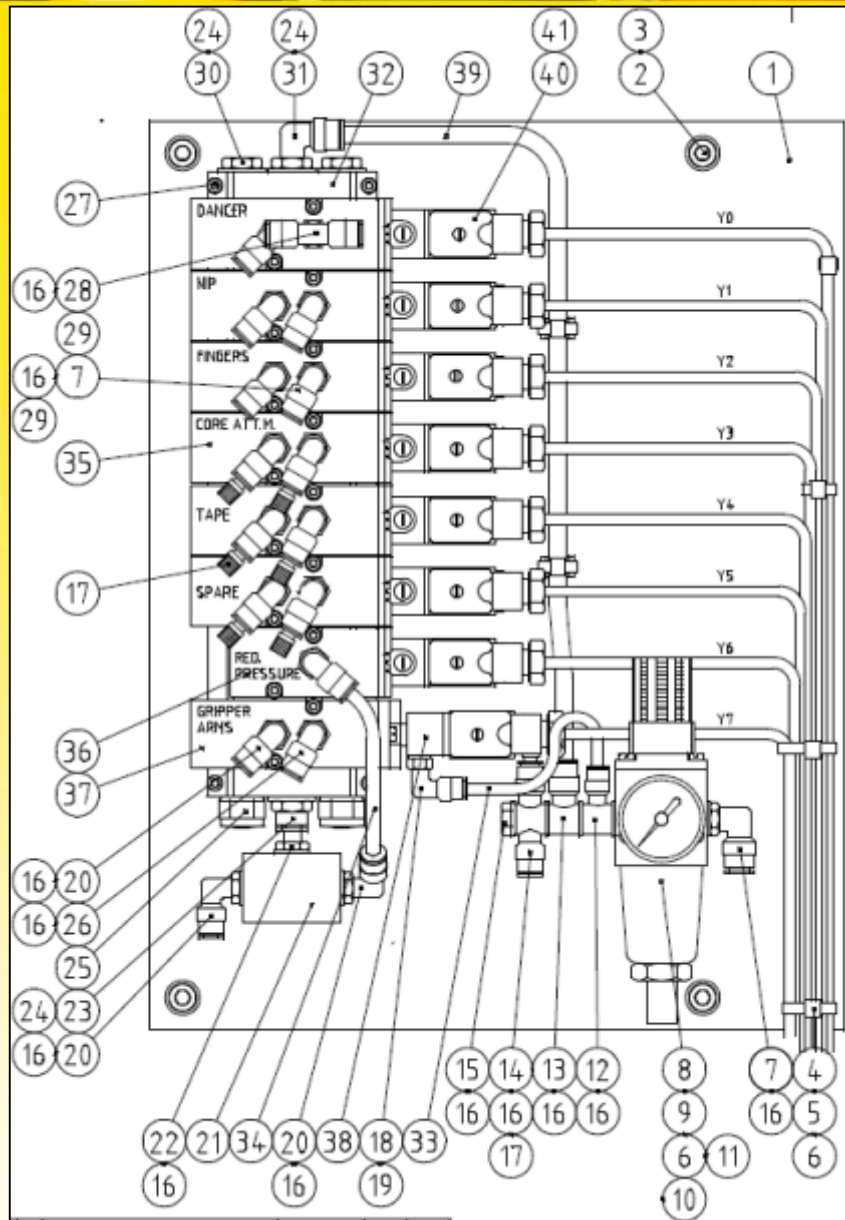
200388



201381



## Pneumatics

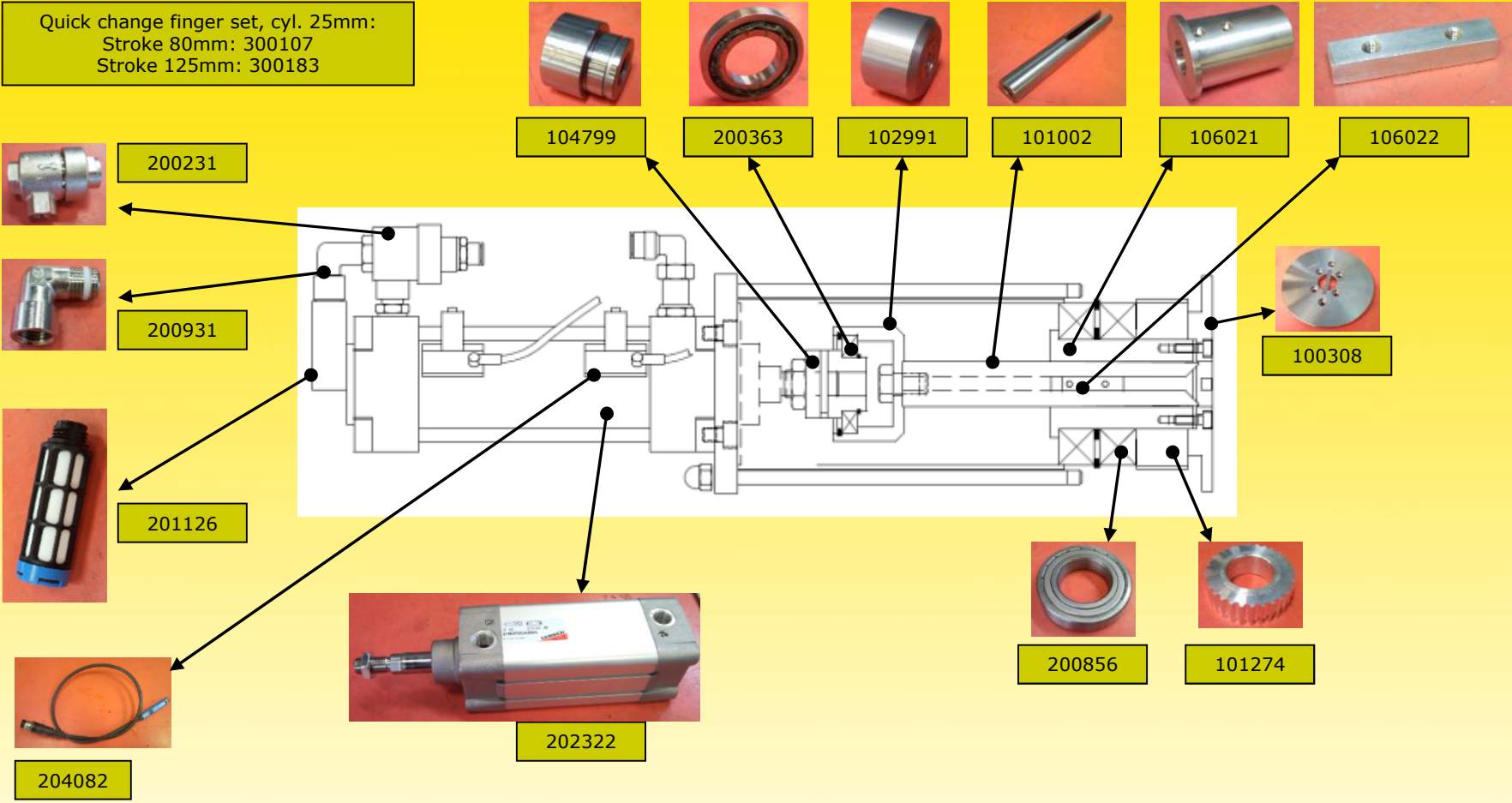


41	(7)	EL. CONNECTOR	201237
40	(7)	COIL	201270
39	1	PNEUM. PIPE	200437
38	(1)	PILOT VALVE	201271
37	(1)	DIRECTIONAL VALVE	201266
36	(1)	DIRECTIONAL VALVE	202167
35	(5)	DIRECTIONAL VALVE	201267
34	1	PNEUM. PIPE	200436
33	1	PNEUM. PIPE	200526
32	1	VALVE ASSY. KOMPL.	202178
31	1	PNEUM. L-CONNECTOR	202145
30	2	PLUG	202134
29	1	SPACER	202137
28	1	PNEUM. T-CONNECTOR	202138
27	4	SCREW	200821
26	7	PNEUM. L-CONNECTOR LONG	202140
25	2	SILENCER	202135
24	4	NYLON WASHER	200353
23	1	PNEUM. CON. STRIGHT	202142
22	1	PNEUM. CONNECTOR NIPPEL	202143
21	1	VALVE	202144
20	8	PNEUM. L-CONNECTOR	202139
19	1	NYLON WASHER	200615
18	1	PNEUM. L-CONNECTOR	202141
17	7	PLUG	202151
16	24	NYLON WASHER	200466
15	1	PNEUM. CON. SCREW	201588
14	1	PNEUM. CON. RING-TYPE	202147
13	1	PNEUM. CON. RING-TYPE	202150
12	1	PNEUM. CON. RING-TYPE	202149
11	2	WASHER	200475
10	2	SCREW	200471
9	1	GAUGE	200270
8	1	PNEUM. REGULATOR	200269
7	2	PNEUM. L-CONNECTOR	202047
6	6	BOLT	201157
5	6	CABLE TIE CLIPS	201377
4	6	CABLE TIES	201837
3	4	BOLT	201040
2	4	WASHER	200224
1	1	ASSEMBLY PLATE	104405



Parts for Cyl. 25mm finger std. Stroke, 80mm

Quick change finger set, cyl. 25mm:  
 Stroke 80mm: 300107  
 Stroke 125mm: 300183





Parts for Tear off nip



203611



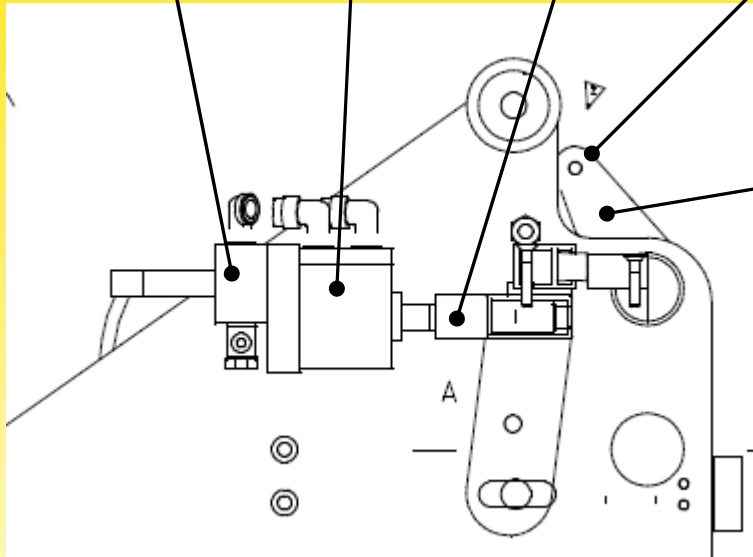
202485



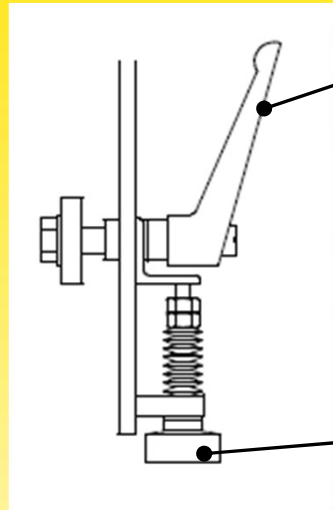
201863



202023



101245



201305



200410



Parts for Spark counter



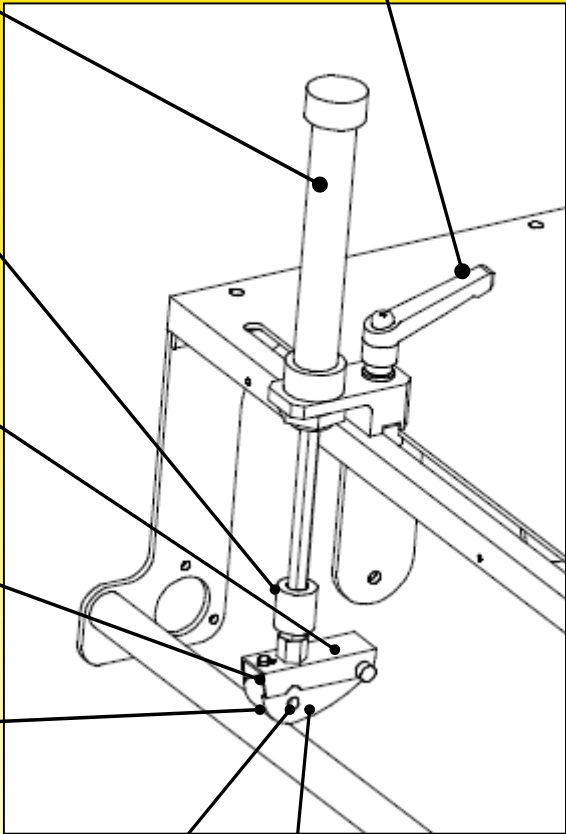
201105



201278



103378



107102

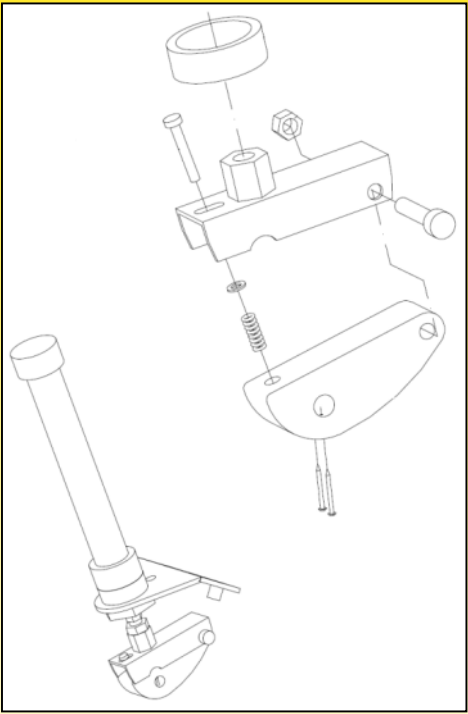


203351



200626

Rebuild kit for conversion from old fixed spark anode to new resilient type. Part No. 300109



100649



200424



107101



Parts for Dancer



100796



201202

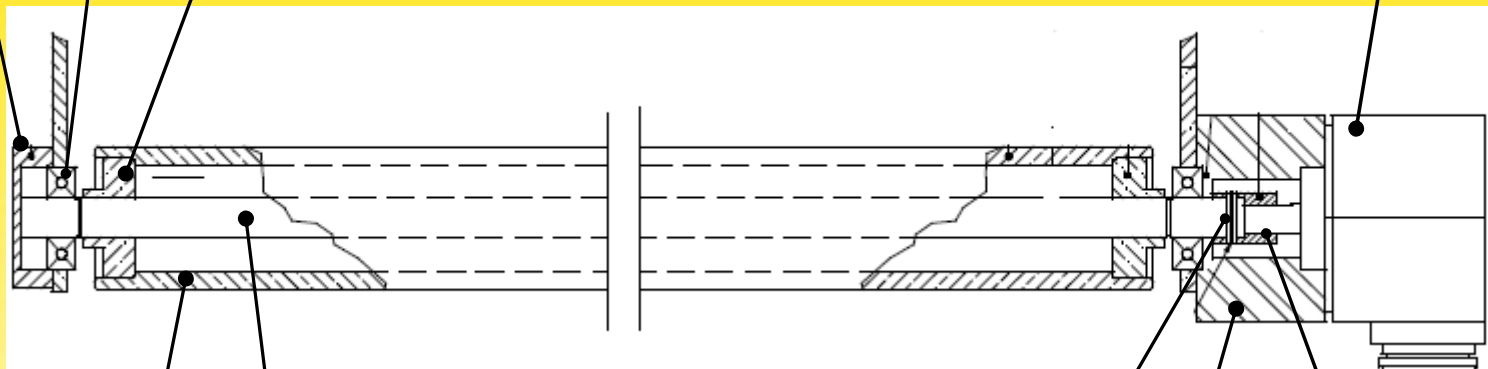


102613



202166 500p/rev.

202192 200p/rev.



100627



102610



200336



102612



102611



Parts for Dancer

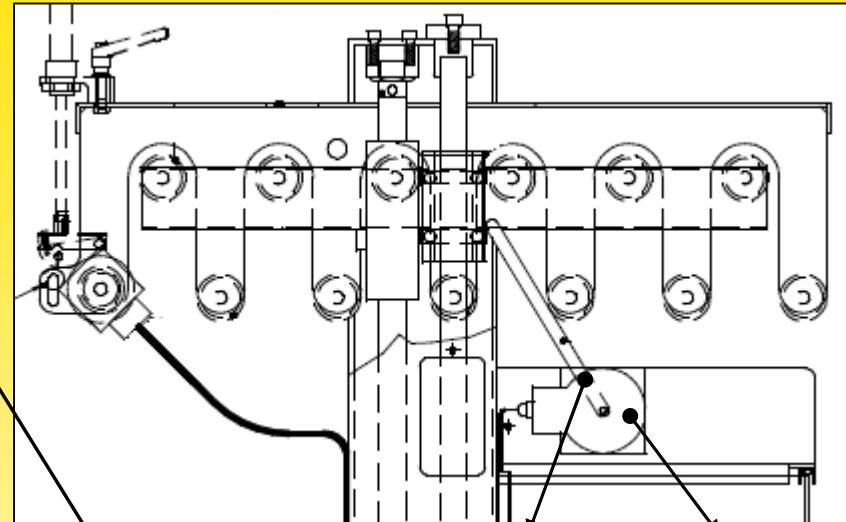
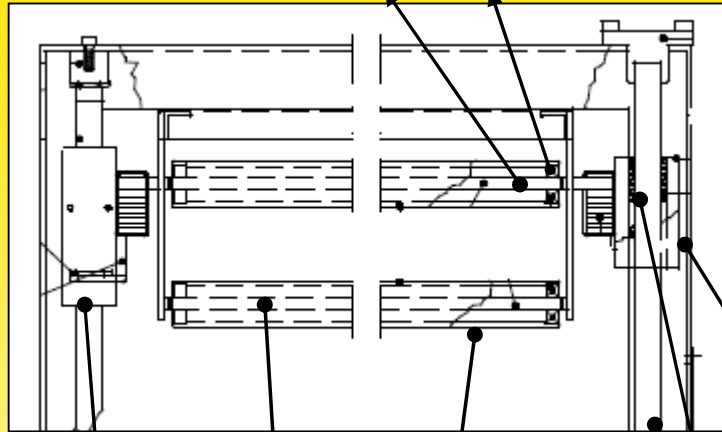
Compl.Light weight  
dancer, Kit No.  
300079



101140



200362



200883



101139



100627



101132



200358



101117



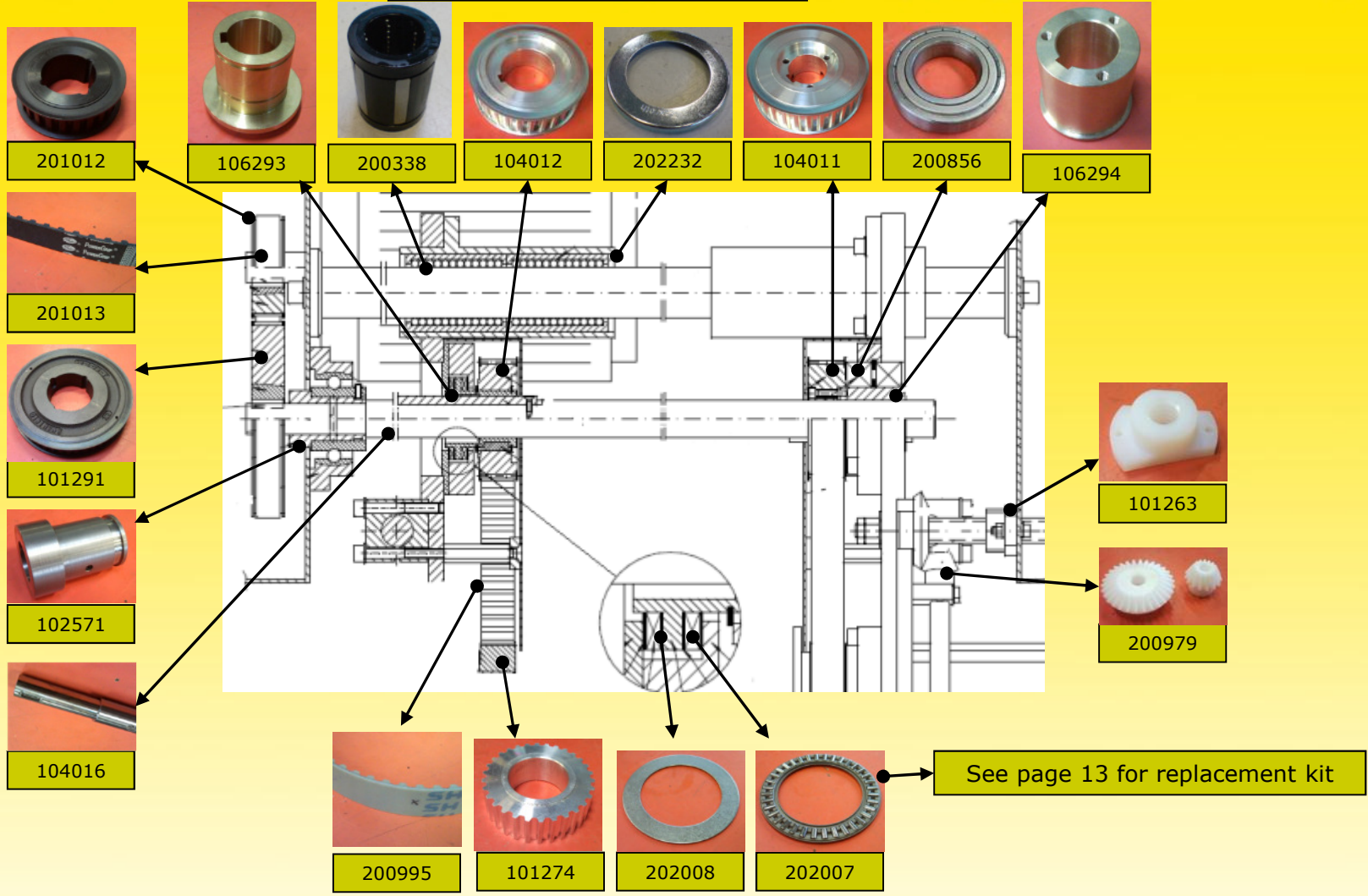
103730



200216

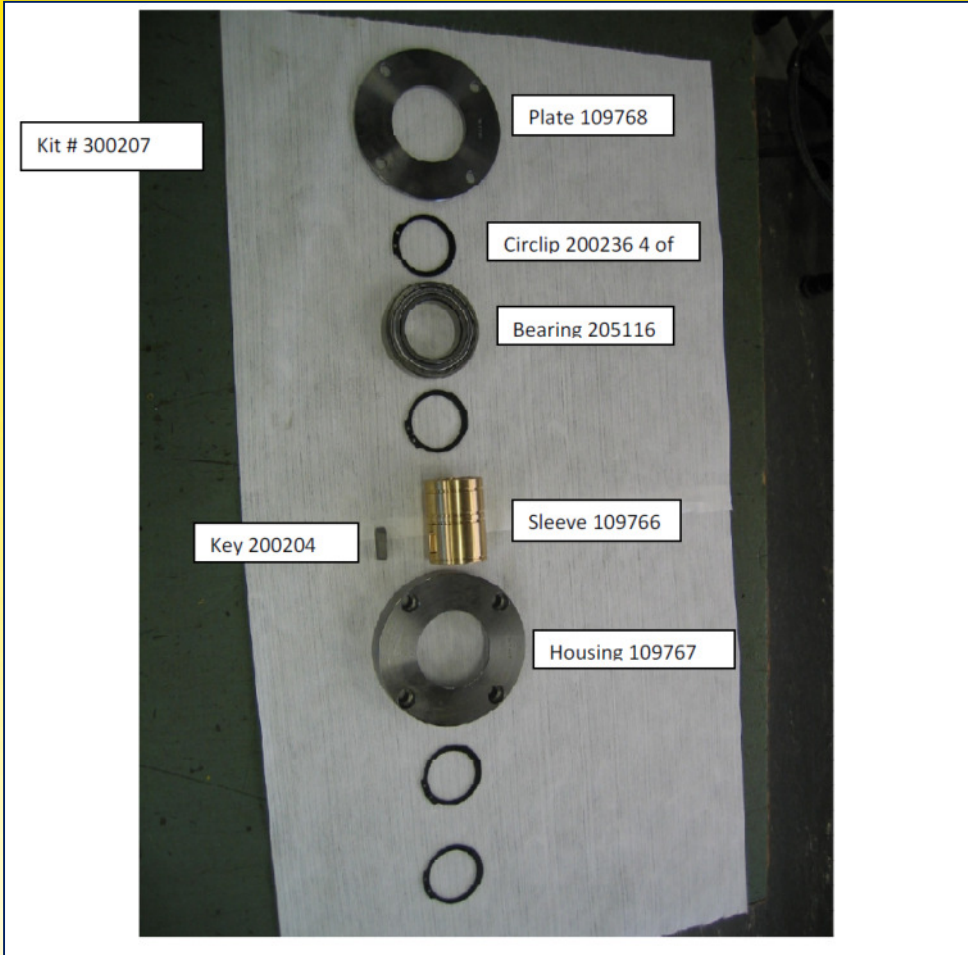


Parts for Drive section





Replacement kit for right hand (motor side) drive shaft bushing and thrust bearing.



Komplete kit is part No. 300207

